



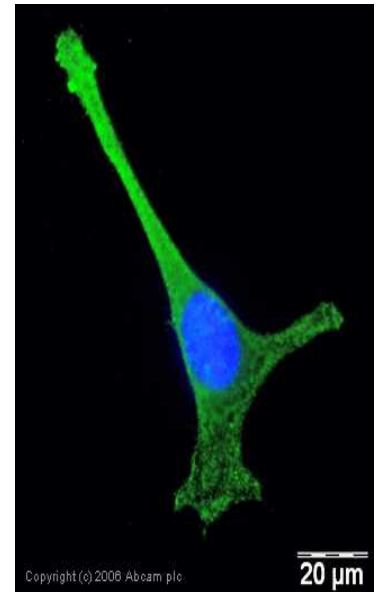
SYMBIOS

Bcl 2 family – produkty firmy Abcam wykorzystywane w badaniach Apoptozy

Apoptosis: the Bcl2 family

We offer a comprehensive range of antibodies targeting the extended members of the Bcl2 family, allowing for the detailed investigation of apoptotic pathways.

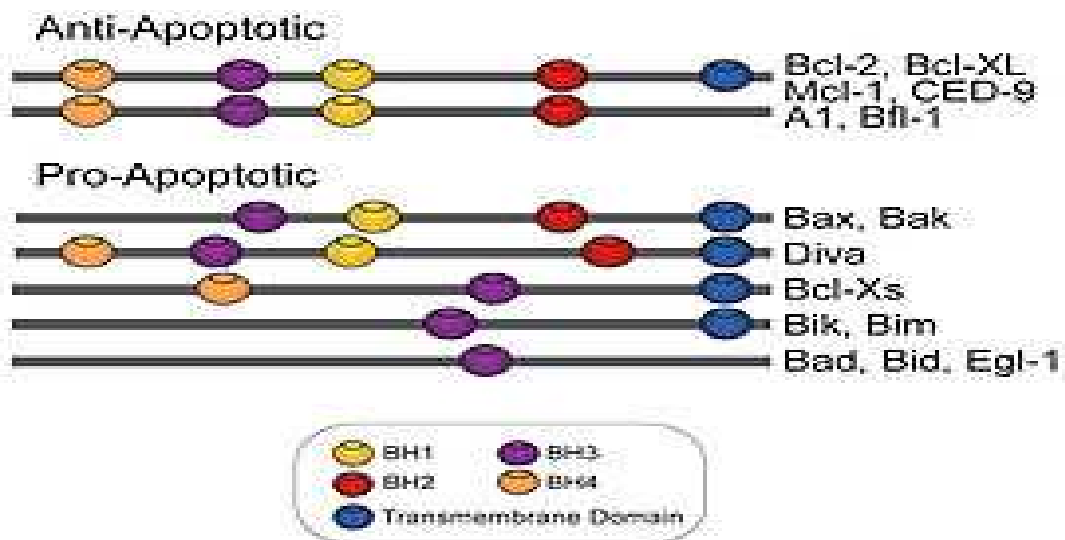
The Bcl2 family form a group of proteins, connected by sequence homology, which are known to participate in the control of apoptosis. The family is divided into three subfamilies; Bcl2-like multidomain proteins, Bax like multidomain proteins and the BH3-only group of proteins.



Ab18210

Apoptosis: the Bcl2 family

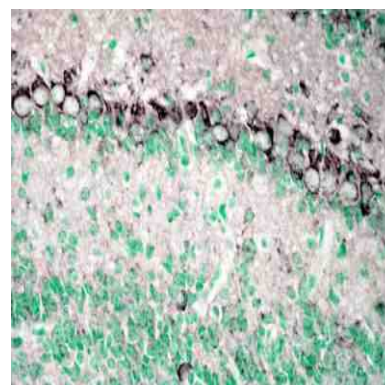
Bcl-2 Family



The Bcl2-like subfamily members exhibit anti-apoptotic activities, while Bax-like and the BH3-only group of proteins are pro-apoptotic in nature. View the full range of Bcl2 family antibodies or browse by subfamily below.

Bcl2-like multidomain (anti-apoptotic)

- Bcl2 antibodies
- Bcl-X (Bcl2L1) antibodies
- Bcl-W (Bcl2L2) antibodies
- Bfl1 (Bcl2A1) antibodies



Ab7937

Bcl2 antibody (ab18210)

- Raised in rabbit
- Clonality polyclonal
- Cross-reactivity human
- Applications western blot immunocytochemistry

Bcl2 antibody [E17] (ab32124)

- Raised in rabbit
- Clonality monoclonal
- Cross-reactivity human, mouse NOT rat
- Applications western blot, IP, FACS, IHC-P, ICC/IF

Bcl2 antibody (ab692)

- Raised in mouse
- Clonality monoclonal
- Cross-reactivity human, NOT mouse or rat
- Applications western blot, IP, IHC-P, ICC/IF

Another Bcl2 polyclonal, ab7973, has already been used in the following papers with great success:

- Mellado-Gil JM & Aguilar-Diosdado M. High glucose potentiates cytokine- and streptozotocin-induced apoptosis of rat islet cells: effect on apoptosis-related genes. *J Endocrinol* 183:155-62 (2004). PubMed: 15525583
- Kim BE et al. Involvement of Sox-4 in the cytochrome c-dependent AIF-independent apoptotic pathway in HeLa cells induced by Delta12-prostaglandin J2. *Exp Mol Med* 36:444-53 (2004). PubMed: 15557816

General references for Bcl2:

- Revelos K et al. Immunohistochemical expression of Bcl2 is an independent predictor of time-to-biochemical failure in patients with clinically localized prostate cancer following radical prostatectomy. *Anticancer Res* 25:3123-33 (2005). PubMed: 16080576
- Lee SD et al. Effects of short- and long-term hypobaric hypoxia on Bcl2 family in rat heart. *Int J Cardiol* : (2005). PubMed: 16005992

Bax-like multidomain (pro-apoptotic)

- o Bax antibodies
- o Bak antibodies
- o Bok antibodies

BH3-only (pro-apoptotic)

- o Bid antibodies
- o Bim antibodies
- o Bad antibodies
- o Bik antibodies
- o Noxa antibodies
- o Bmf antibodies
- o Hrk antibodies
- o BNIP3L antibodies
- o PUMA antibodies



SYMBIOS sp. z o.o.

www.symbios.com.pl; symbios@symbios.com.pl

t./f. +58 692 8083

83-010 Straszyn, ul. Modrzewiowa 37